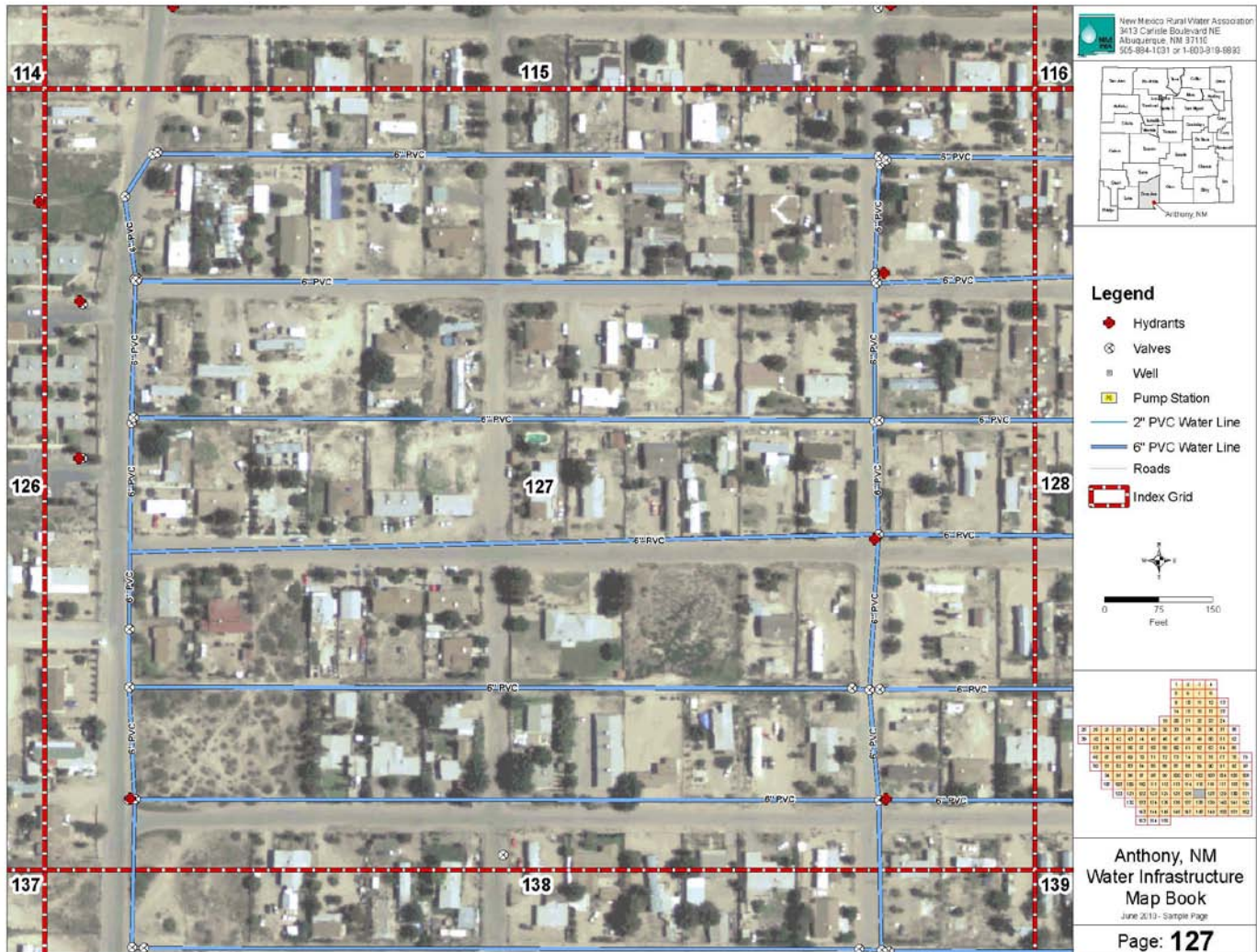


MAP BOOK SAMPLE PAGE



WHAT DO WE RECEIVE?

- Training to get the most out of your GIS project
- Digital map file with software
- Large-scale wall map and/or indexed map book
- All data and maps will be owned by the system

Our goal is to help community utilities develop and maintain high quality mapping systems for more effective planning.

WHAT WILL IT COST?

Fees are based on the number of data features to be collected and the time required to produce the maps. Time required will vary per system and will be included in your estimate. We will work with you to design a project that meets your specific needs and budget.

- Time: \$75/hour plus travel expenses for field work, \$100/hour for data processing
- Map Book: \$50 plus \$5 per page
- Wall Map: \$100

HOW DO WE START?

Just contact NMRWA and express your interest in a mapping project. We will do a short presentation for your governing body and a pre-assessment survey to determine exact project needs. System personnel must accompany our staff in the field to ensure we collect the features you want. NMRWA will provide a scope of work, a cost estimate for the data collection plus map production, and a service contract.

CONTACT Janis Allen, *GIS Data Specialist* 505-884-1031 janis@nmrwa.org

WHAT IS GIS & GPS?

Geographic Information Systems (GIS) combine mapping software with database management tools to collect, organize, and share many different types of information. It is much more than “just” highly accurate maps! GIS can store, display and help interpret all the important attributes of your system.

The Global Positioning System (GPS) is a navigation satellite system placed into orbit by the U.S. Department of Defense and provides precise location information. It is maintained by the U.S. government and is freely accessible by anyone with a GPS receiver.

ACCURATE SYSTEM MAPS

We will work with your system personnel to develop precise, customized maps of your infrastructure. Data collected in the field will show exact placement of features such as meters, valves, hydrants, lines, tanks, wells, and anything else. Using the Trimble® GeoXH handheld receiver the accuracy is less than one foot (10-30cm) of the actual location of the feature. Additional details can be added such as line size, date of installation, or manufacturer, allowing you to monitor and evaluate your system on a whole new level.

CONTACT *Janis Allen, GIS Data Specialist* 505-884-1031 janis@nmrwa.org

New Mexico Rural Water Association
3413 Carlisle Blvd NE
Albuquerque, NM 87110

New Mexico Rural Water Association

WATER & WASTEWATER SYSTEM MAPPING

**Does your water or wastewater system lack accurate, up-to-date maps?
Do you need a better way to efficiently manage infrastructure assets?
NMRWA now offers mapping services to our members at affordable rates
using the latest GIS and GPS technology.**