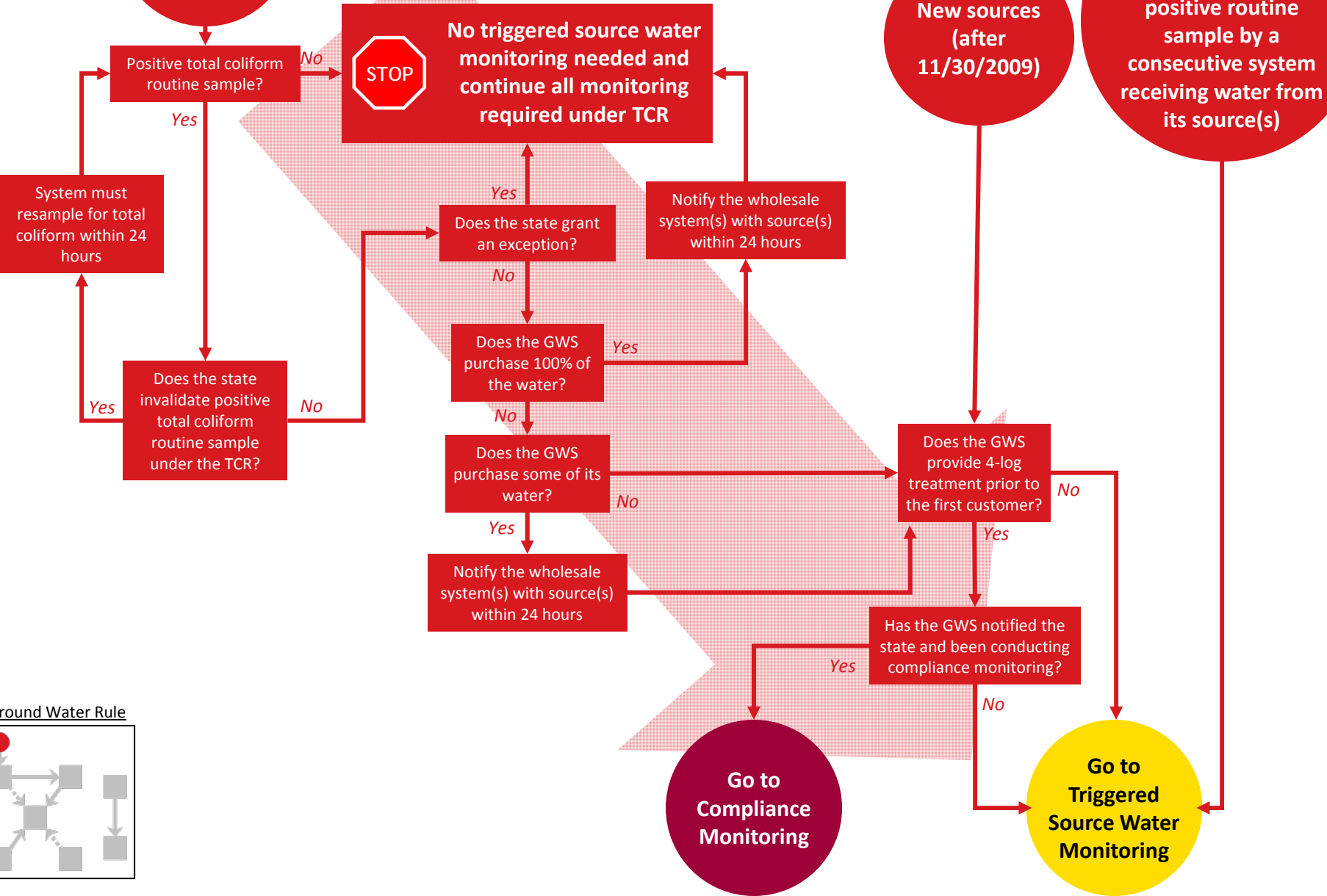
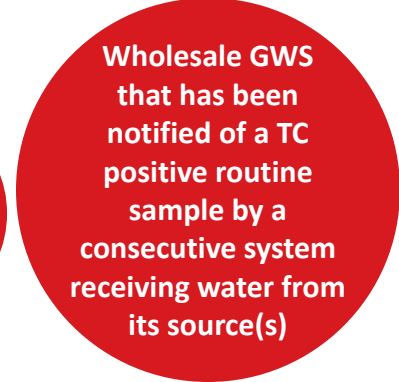
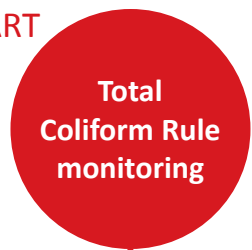


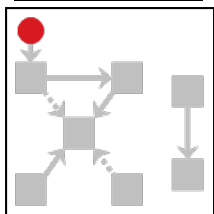
START

POSITIVE TC SAMPLE UNDER the TCR

START

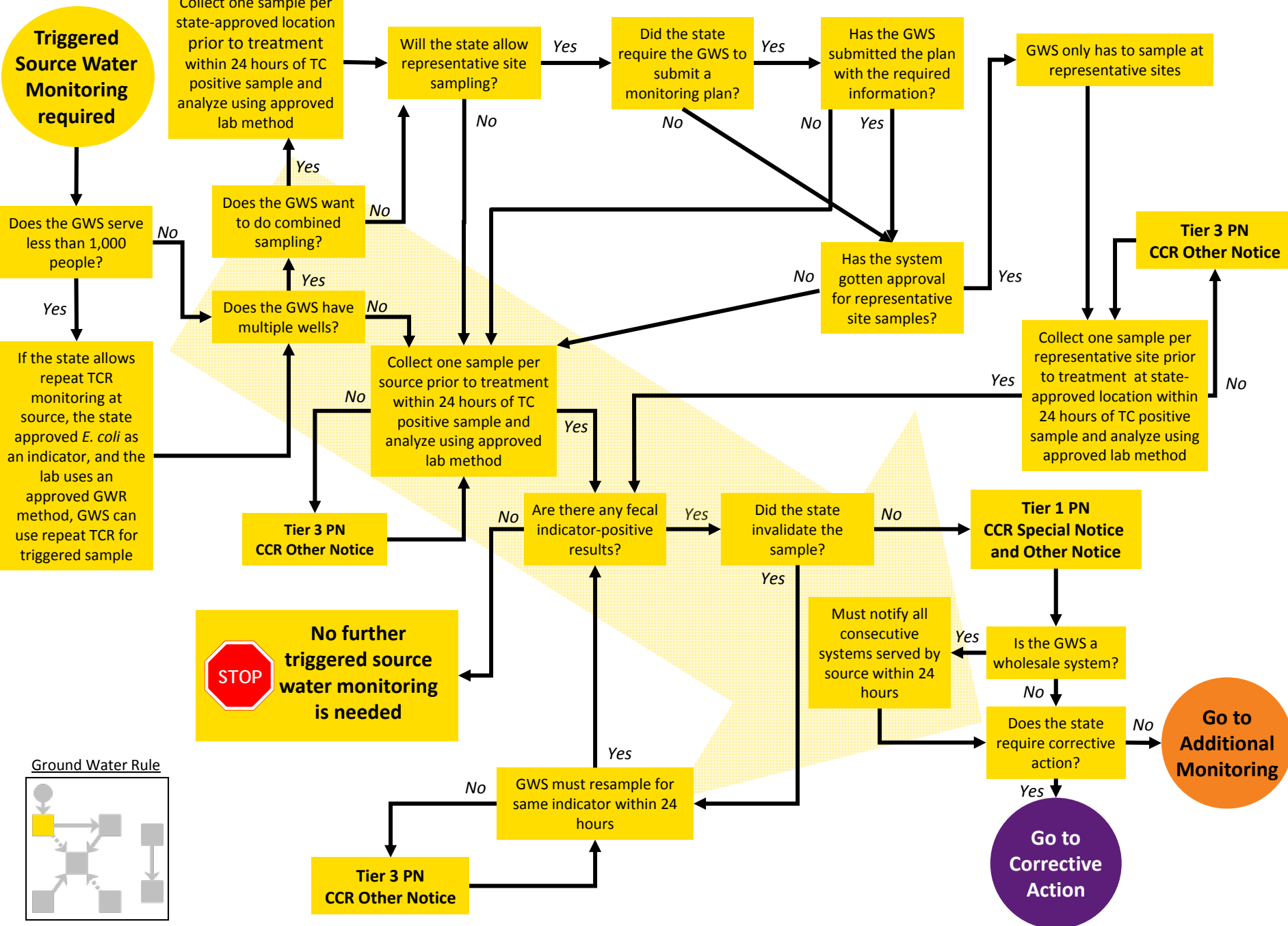


Ground Water Rule

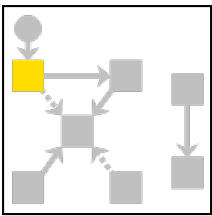


TRIGGERED SOURCE WATER MONITORING

START



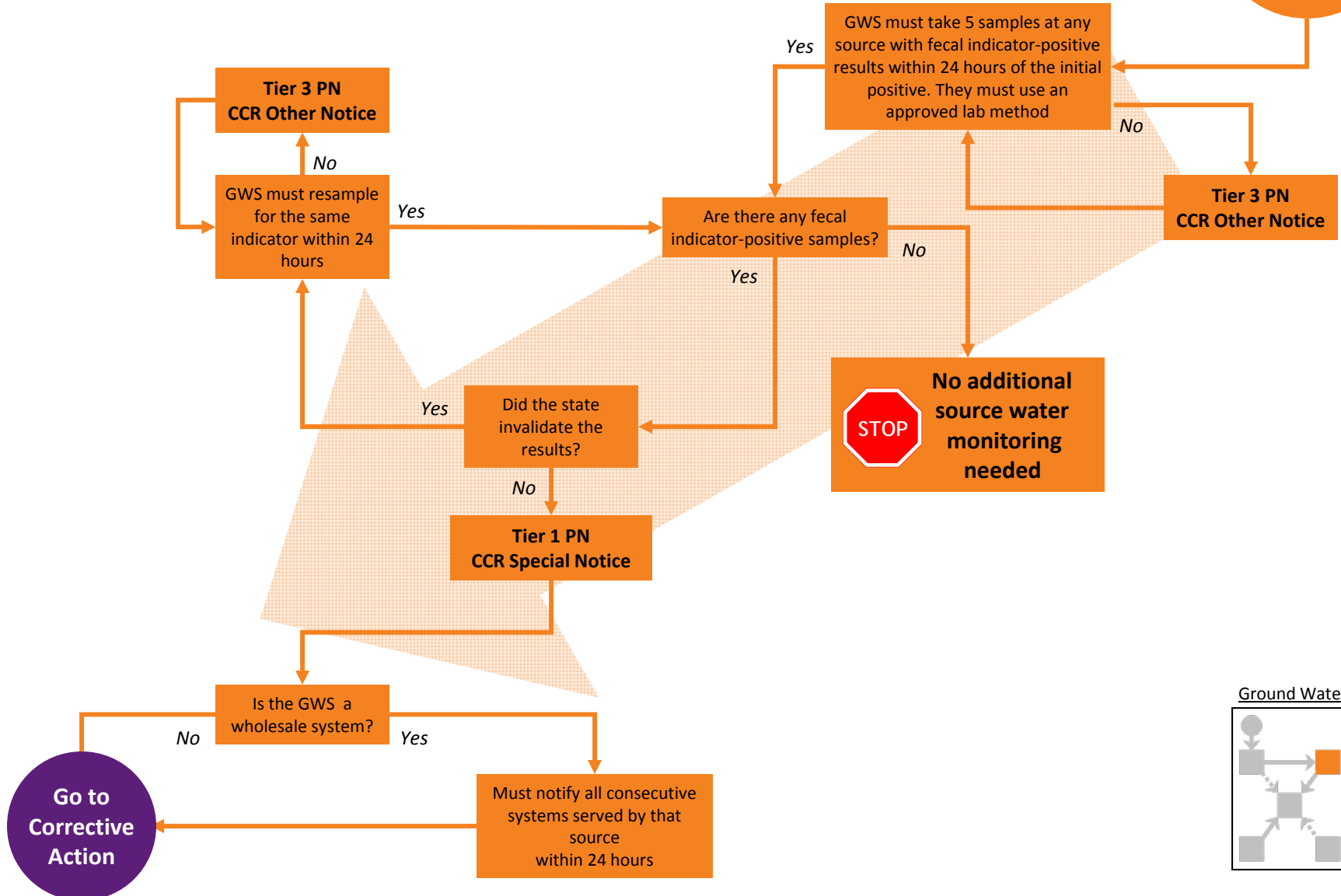
Ground Water Rule



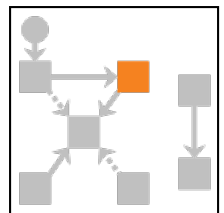
ADDITIONAL SOURCE WATER MONITORING

START

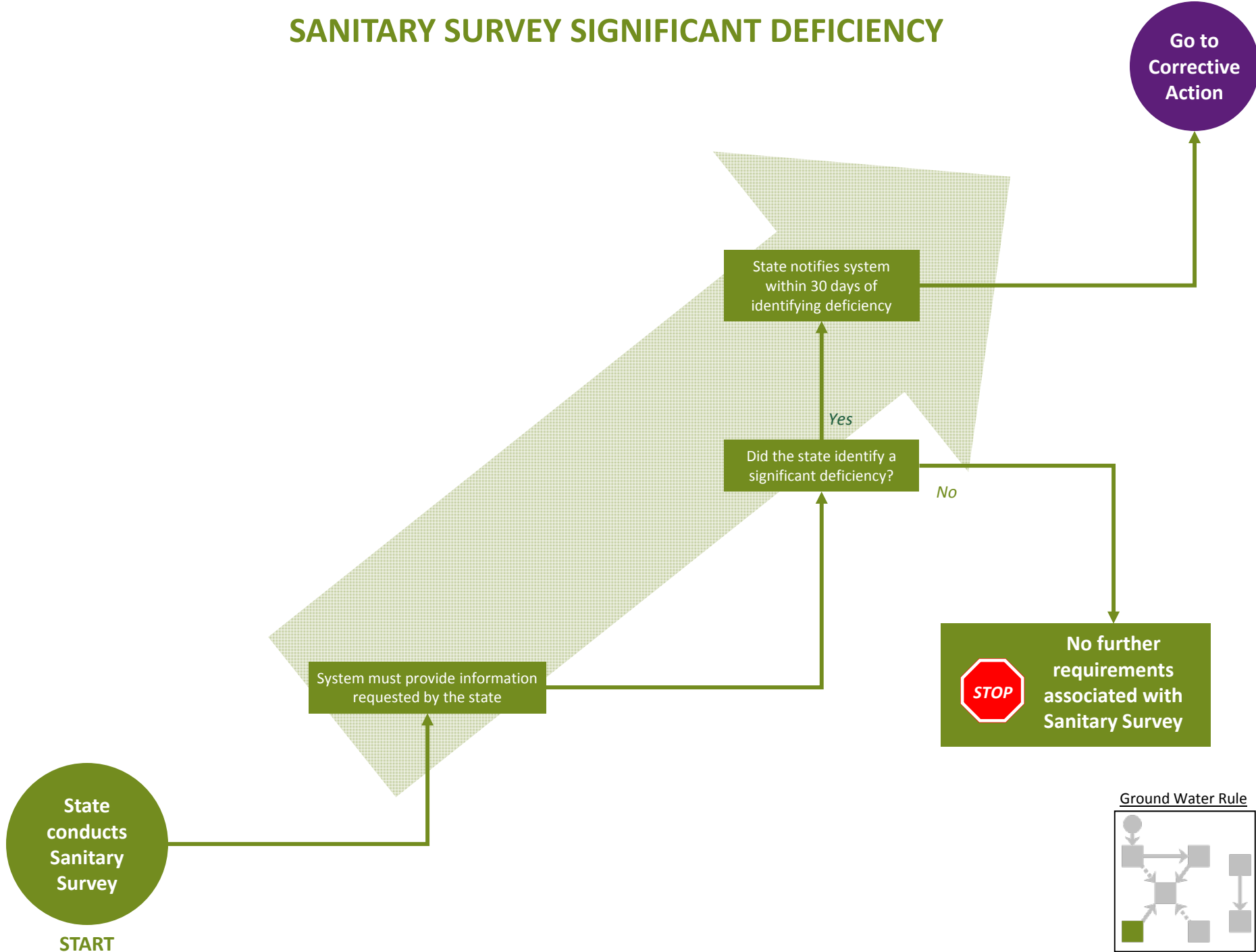
GWS must conduct additional sampling



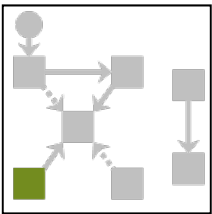
Ground Water Rule



SANITARY SURVEY SIGNIFICANT DEFICIENCY

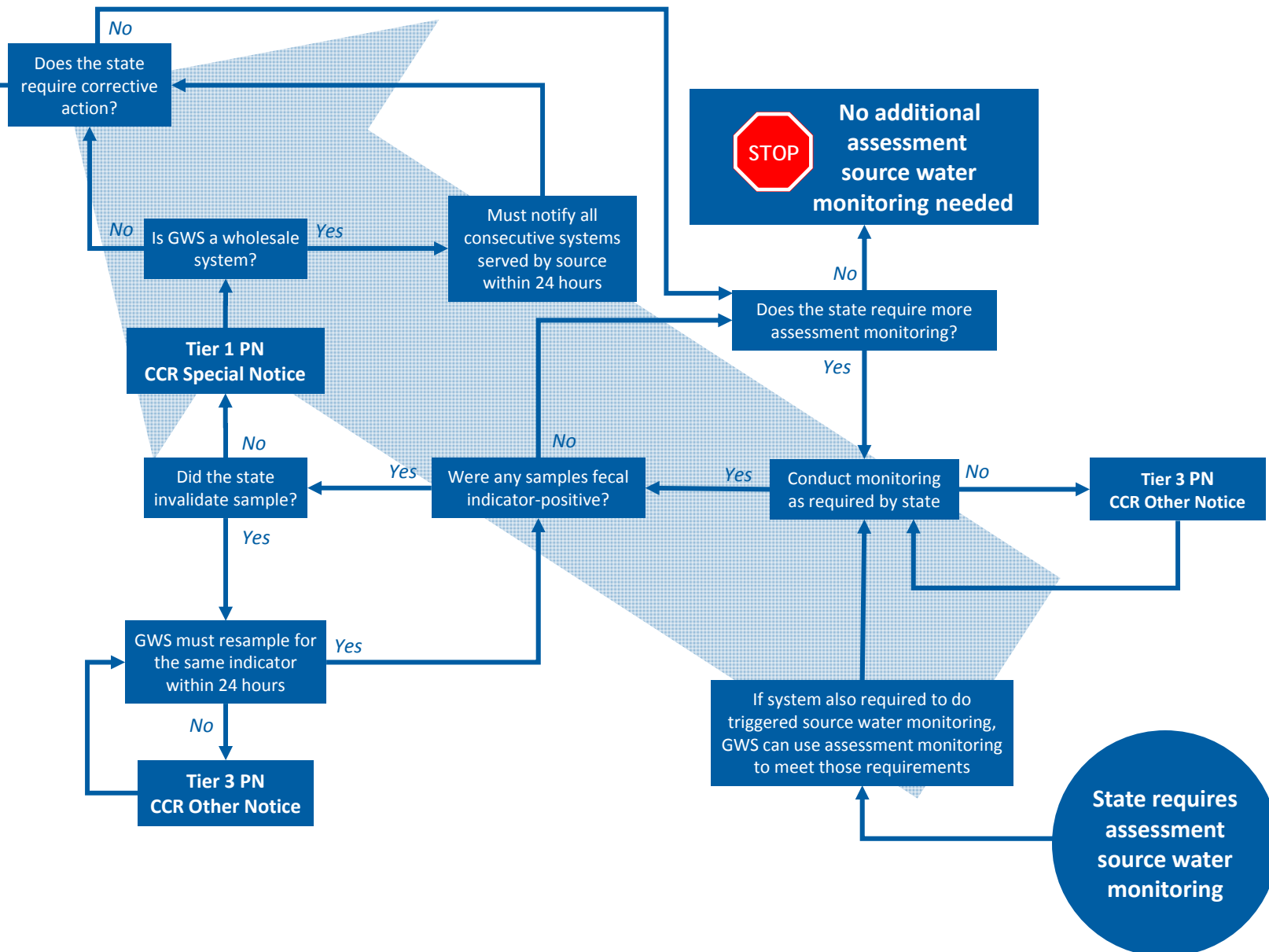


Ground Water Rule

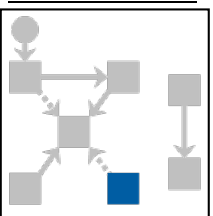


ASSESSMENT SOURCE WATER MONITORING

Go to Corrective Action



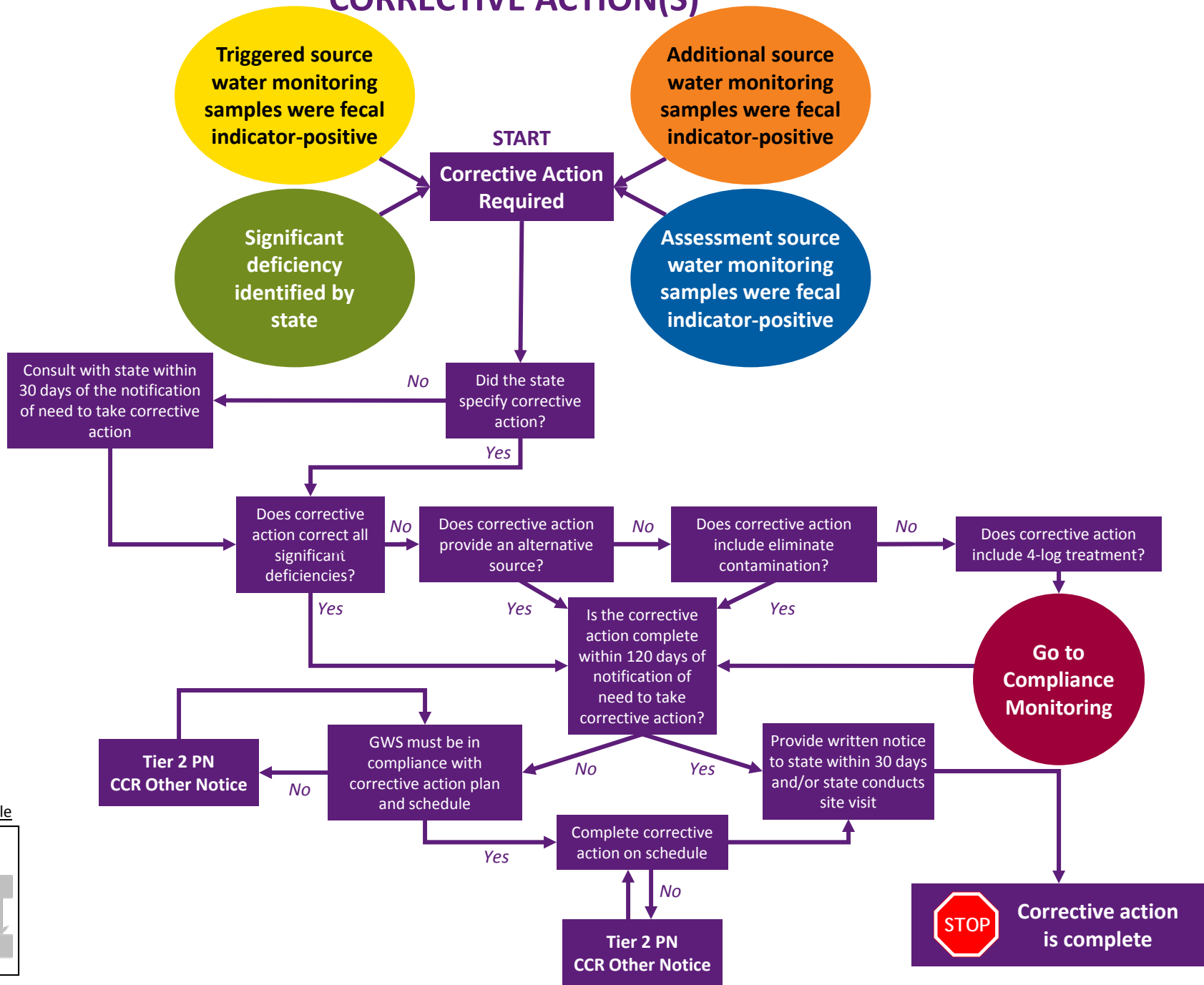
Ground Water Rule



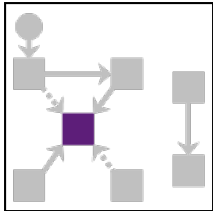
State requires assessment source water monitoring

START

CORRECTIVE ACTION(S)



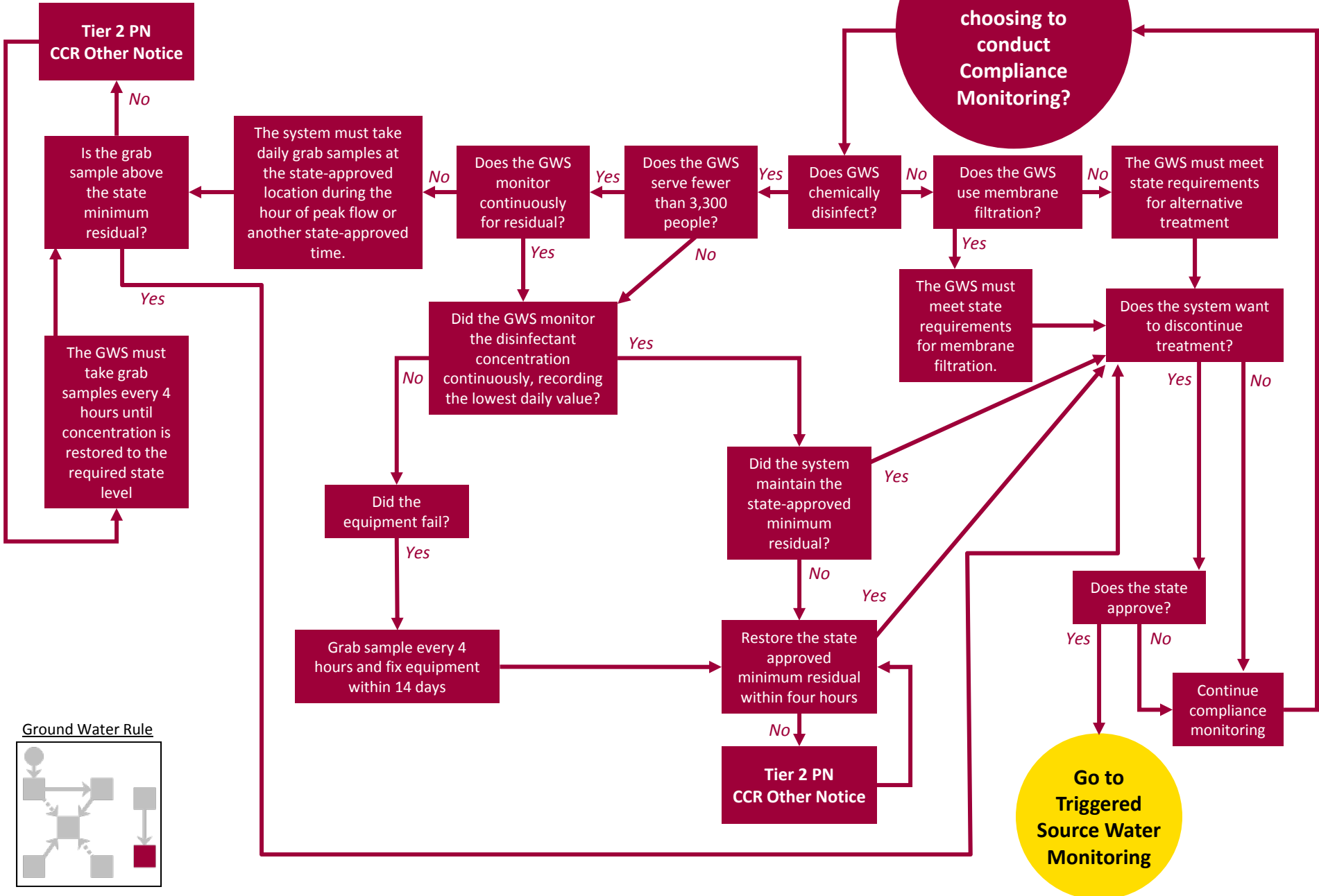
Ground Water Rule



COMPLIANCE MONITORING

START

Is GWS required to conduct or choosing to conduct Compliance Monitoring?



Ground Water Rule

